

# MONUMENT HEALTH'S 24TH ANNUAL

## CARDIOVASCULAR DISEASE AND WELLNESS SYMPOSIUM

### 24 YEARS OF PROGRESS

**Oct. 20, 2022**

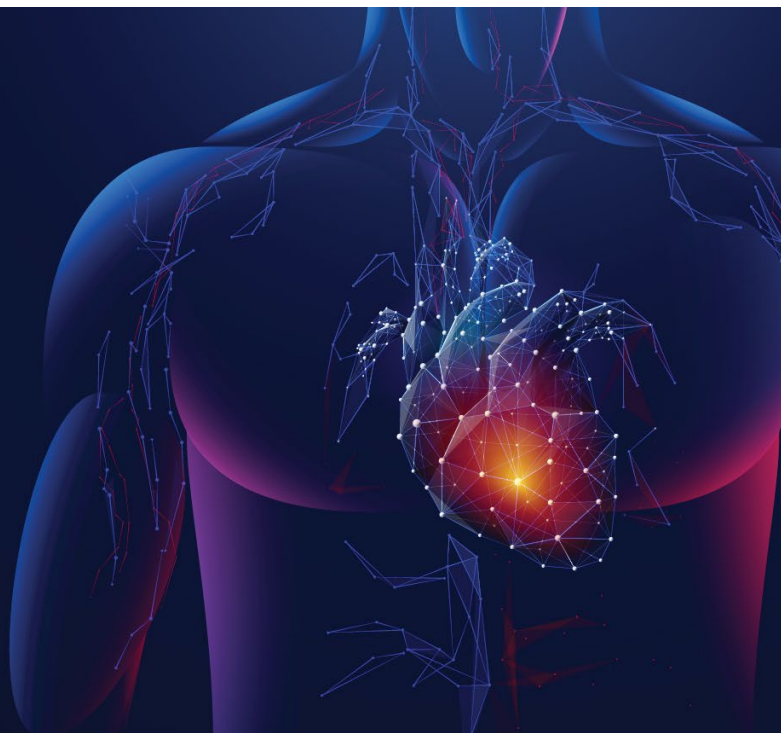
**7:30 a.m. – 5 p.m.**

CME/CE Credits available

A day-long symposium offering a practical approach to the advances in cardiovascular care and technology, new preventative strategies and latest wellness information.

### In-Person and Virtual Options Available

The virtual Cardiac Symposium will be hosted via WebEx.



This complimentary symposium is beneficial for physicians, nurses, EMS responders, physician assistants and nurse practitioners.

7:30 a.m.	<b>Registration, Vendors and Light Breakfast</b>
8:00 a.m.	<b>Welcome - Introduction</b> Mike Tilles - Vice President Monument Health Rapid City Market
8:10 a.m.	<b>Updates in Cardiac MRI/CTA</b> Fawzi Ameer, M.D.   Cardiology Monument Health Heart and Vascular Institute
8:50 a.m.	<b>Break/Q&amp;A - 5 minutes</b>
8:55 a.m.	<b>What Is Killing Doctors and Nurses in 2022?</b> Jose Teixeira, M.D.   Cardiology Monument Health Heart and Vascular Institute
9:45 a.m.	<b>Break/Q&amp;A - 15 minutes</b>
10:00 a.m.	<b>The Strong Heart Study: 35 Years of Epidemiology and Intervention</b> Lyle Best, M.D. Strong Heart Study
11:00 a.m.	<b>Updates in Cardiovascular Disease</b> Alex Schabauer, M.D.   Cardiology Drew Purdy, M.D.   Cardiology Monument Health Heart and Vascular Institute
12:00 p.m.	<b>Lunch and Vendors</b>
1:10 p.m.	<b>Welcome Back</b> Jake Staley - Director Monument Health Heart and Vascular Institute
1:15 p.m.	<b>Panel Discussion/Case Studies</b> <b>CABG Conduit Selection and Patency</b> Morgan McGuire, PA-C <b>Iliofemoral DVT: May Thurner</b> Cassie Brandsted, CNP <b>Treatment of Heart Failure</b> Melanie White, CNP Monument Health Heart and Vascular Institute

2:10 p.m.	<b>Break/Q&amp;A - 5 minutes</b>
2:15 p.m.	<b>Supraventricular Tachycardia (SVT)</b> Saverio Barbera, M.D.   Electrophysiology Monument Health Heart and Vascular Institute
3:00 p.m.	<b>Break/Q&amp;A - 20 minutes</b>
3:20 p.m.	<b>Current Future Endovascular Treatments for Acute Ischemic Stroke</b> Jae Kim, M.D.   Neurology Monument Health Neurology and Rehabilitation
4:10 p.m.	<b>Break/Q&amp;A - 5 minutes</b>
4:15 p.m.	<b>Health Equity in Cardiac and Vascular Medicine</b> Joseph Tuma, M.D.   Cardiovascular Medicine, Vascular Medicine, Structural Heart, Interventional Cardiology Monument Health Heart and Vascular Institute
5:00 p.m.	<b>Closing</b> Drew A. Purdy, M.D. Alex Schabauer, M.D. Monument Health Heart and Vascular Institute

**To RSVP or for more information:**  
[monument.health/cardiovascularsymposium](https://monument.health/cardiovascularsymposium)

 **MONUMENT HEALTH**  
HEART AND VASCULAR INSTITUTE



**Fawzi Ameer, M.D.**  
Monument Health Heart and  
Vascular Institute



**Saverio Barbera, M.D.**  
Monument Health Heart and  
Vascular Institute



**Lyle Best, M.D.**  
Strong Heart Study



**Jae Kim, M.D.**  
Monument Health Neurology  
and Rehabilitation



**Drew Purdy, M.D.**  
Monument Health Heart and  
Vascular Institute



**Jose Teixeira, M.D.**  
Monument Health Heart and  
Vascular Institute



**Alex Schabauer, M.D.**  
Monument Health Heart and  
Vascular Institute



**Joseph Tuma, M.D.**  
Monument Health Heart and  
Vascular Institute



**Cassie Brandsted, CNP**  
Monument Health Heart and  
Vascular Institute



**Morgan McGuire, PA-C**  
Monument Health Heart and  
Vascular Institute



**Melanie White, CNP**  
Monument Health Heart and  
Vascular Institute

Participants must attend conference sessions and turn in their conference evaluation at the end of the program to successfully complete the continuing nursing education activity.

Recorded sessions will be available from October 31-November 30, 2022. Participants who view recorded sessions must complete recorded sessions and turn in their conference evaluation to successfully complete the continuing nursing education activity.

Contact hours will be available commensurate with the sessions attended both live and recorded:

- Part 1 (Morning Session 0800-1200)—3.5 contact hours

- Part 2 (Afternoon Session 1310-1700)—3.25 contact hours
- Entire Session (0800-1700)—6.75 contact hours

This nursing continuing professional development activity was approved by Montana Nurses Association, an accredited approver with distinction by the American Nurses Credentialing Center's Commission on Accreditation.

There are no relevant financial relationships with ineligible companies for those involved with the ability to control the content of this activity.