



Construction Update

Interim Life Safety Measures (ILSM)

Vs 4-2, 18 July 17



Agenda

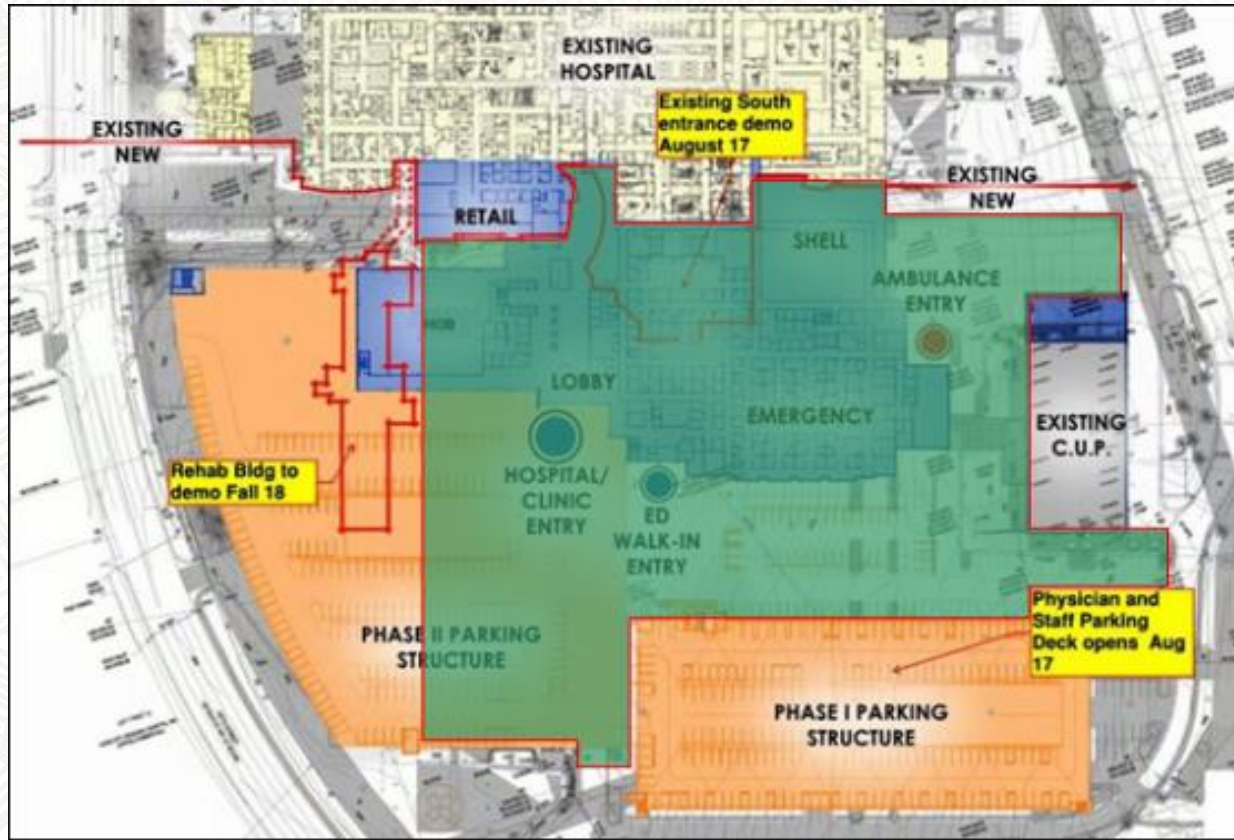
- Who needs this briefing
- Next Phase of Construction – South Tower
- Why the ILSM?
- Impact to 2nd floor Exiting
- Impact to South Parking for Staff

Who needs this briefing?

- All Rapid City Hospital Caregivers.
- Life Safety Code requires that all staff be trained as to the 2nd floor south fire exit closures
- **Remember:** The hospital is a very safe facility due to fire proof design, fire sprinklers and fire/smoke detectors

Next Phase of Construction

New Tower – South Side



Once the new Parking Deck is open, then the “green” area between the CUP to the Rehab Building will be a construction zone.

No Staff access.

Why the ILSM?



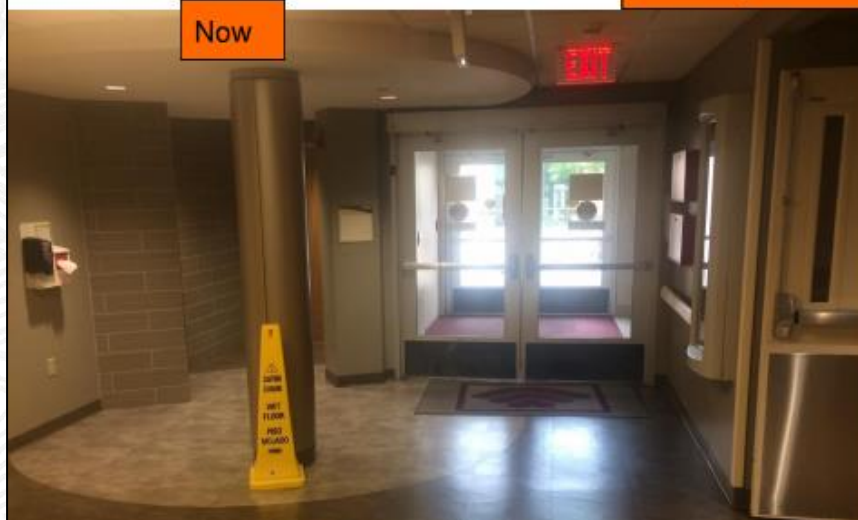
Interim Life Safety Measures are measures that are implemented to assure the safety of all building occupants during periods when elements of the life safety code and building codes are compromised due to construction, impairment of fire safety systems, failure of fire safety systems or discovery of a life safety code/building code deficiency.

Who Requires ILSM?

- NFPA
- Life Safety Code
- The Joint Commission
- CMS
- South Dakota DOH
- Rapid City Fire Department
- RCRH Policy

Impact to 2nd floor Exiting

Example of a blocked south exit



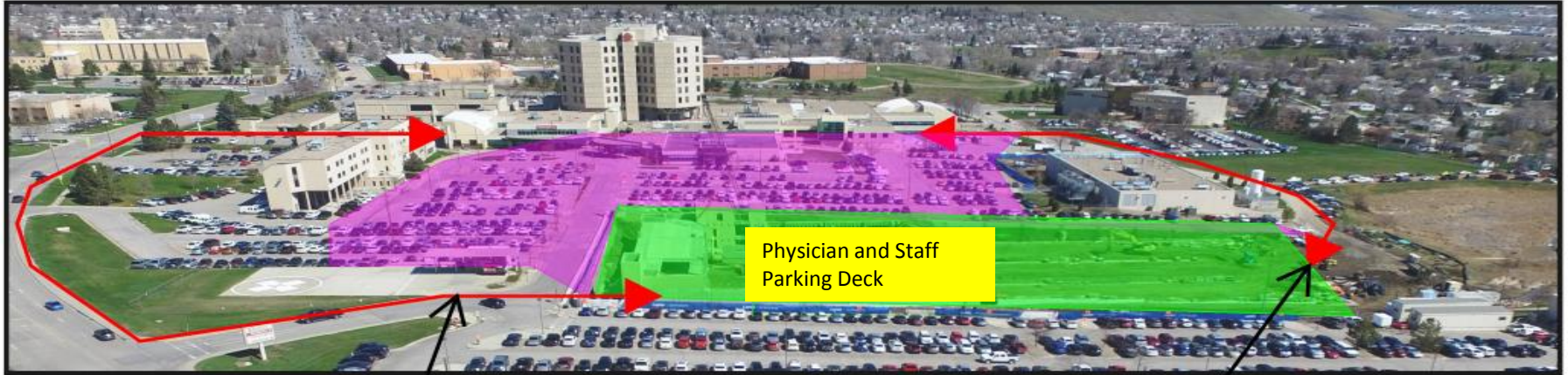
All south doors that exit into the construction zone will be blocked off to form a fire safe and weathertight exterior barrier.

To egress the Hospital, just follow the **EXIT** signs

2nd Flr Exit will be through the new corridor to the west, near the interim ED drop off point (opens mid Aug 17).

1st floor exits to the north and east.

Impact to South Parking



West - Staff walk path to new ED Interim doorway or stairs to 1st floor East Auditorium.

East - Staff walk path to CCI door on East side.



No Staff, Visitor or Patient Access to South Doors, in the purple area, from mid Aug 17 for a period about 18 months.



Questions?

- **Safety/Security/Parking**
Rob Wilson 605-755-5544
- **Environment of Care**
Dave Ellenbecker-Plant Operations 605-755-8009
- **Construction Coordination**
RH Construction Management Team 605-755-7159